

2008

Assessment of Kalamazoo County's Education for Employment (EFE) Programs Using 2007 Survey Data

Kevin Hollenbeck

W.E. Upjohn Institute, hollenbeck@upjohn.org

Jason Preuss

W.E. Upjohn Institute

Citation

Hollenbeck, Kevin, and Jason Preuss. 2008. "Assessment of Kalamazoo County's Education for Employment (EFE) Programs Using 2007 Survey Data." Prepared for the Education for Employment (EFE) Council.

<https://research.upjohn.org/reports/49>

This title is brought to you by the Upjohn Institute. For more information, please contact ir@upjohn.org.

Assessment of Kalamazoo County's Education for Employment (EFE) Programs Using 2007 Survey Data

Kevin M. Hollenbeck, Senior Economist
Jason Preuss, Research Analyst

March 13, 2008

W.E. Upjohn Institute for Employment Research
300 S. Westnedge Ave.
Kalamazoo, MI 49007-4686

Comments or questions are welcome. The author
can be reached at (269) 385-0431 (phone); (269)
343-3308 (fax); or hollenbeck@upjohninstitute.org

Introduction

- 12th year of surveys
- Follow-up of completers (state mandated) (n = 540)
- Current students (n = 1,990)

Follow-Up Survey Analysis

- Postsecondary attendance rate:

	<u>2004</u>	<u>2005</u>	<u>2006</u>	<u>2007</u>
None	22%	17%	20%	18%
2-year	37%	40%	37%	32%
4-year	41%	43%	43%	48%
Total of 2/4 year	78%	83%	80%	82%

Follow-Up Survey Analysis

- Employment rate:

<u>2004</u>	<u>2005</u>	<u>2006</u>	<u>2007</u>
66%	63%	51%	49%

- Unemployment rate:

<u>2004</u>	<u>2005</u>	<u>2006</u>	<u>2007</u>
21%	15%	na	31%

Follow-Up Survey Analysis

- Training-relatedness: (no proxies)

	<u>2004</u>	<u>2005</u>	<u>2006</u>	<u>2007</u>
Education	66%	80%	79%	66%
Employment	74%	71%	57%	43%

- Wages and Hours:

	<u>2004</u>	<u>2005</u>	<u>2006</u>	<u>2007</u>
Wage	\$8.19	\$7.99	\$8.10	\$8.17
Hours	28.2	27.7	28.2	27.2

Follow-Up Survey Analysis

- Work site experience in EFE? 21.2%
- If yes,
 - Program-related 63.3%
 - Mentors very supportive 86.7%

Follow-Up Survey Analysis

- EFE Quality Indicators

– Best classes	79.3%
– Pace	96.3%
– Got along well	93.9%
– Equipment/facilities	81.7%
– Information	92.7%
– Fairness	91.5%
– Questions answered	92.7%
– Organized	87.8%

- Grade 3.54 (A-)

Methodology and Response (Current Students)

- Current students
 - In class (internet, hard copy)
 - Sample = approx. 3,000
 - Completions = 1,990 (66%)
 - 1,164 on-line; 826 hard copy

Analyses

- Total population
- Subgroups:
M/F; W/NW; Work-based/not

Current Students Characteristics

58% male

21.8% NW (11.5% Black)

18.2% in 9th/10th grade

GPA = 3.12

2.6 hours/week homework

1.95 extracurriculars/year

5.1 tardies

4.7 unexcused absences

Figure 1
Gender Composition of Student Enrollment

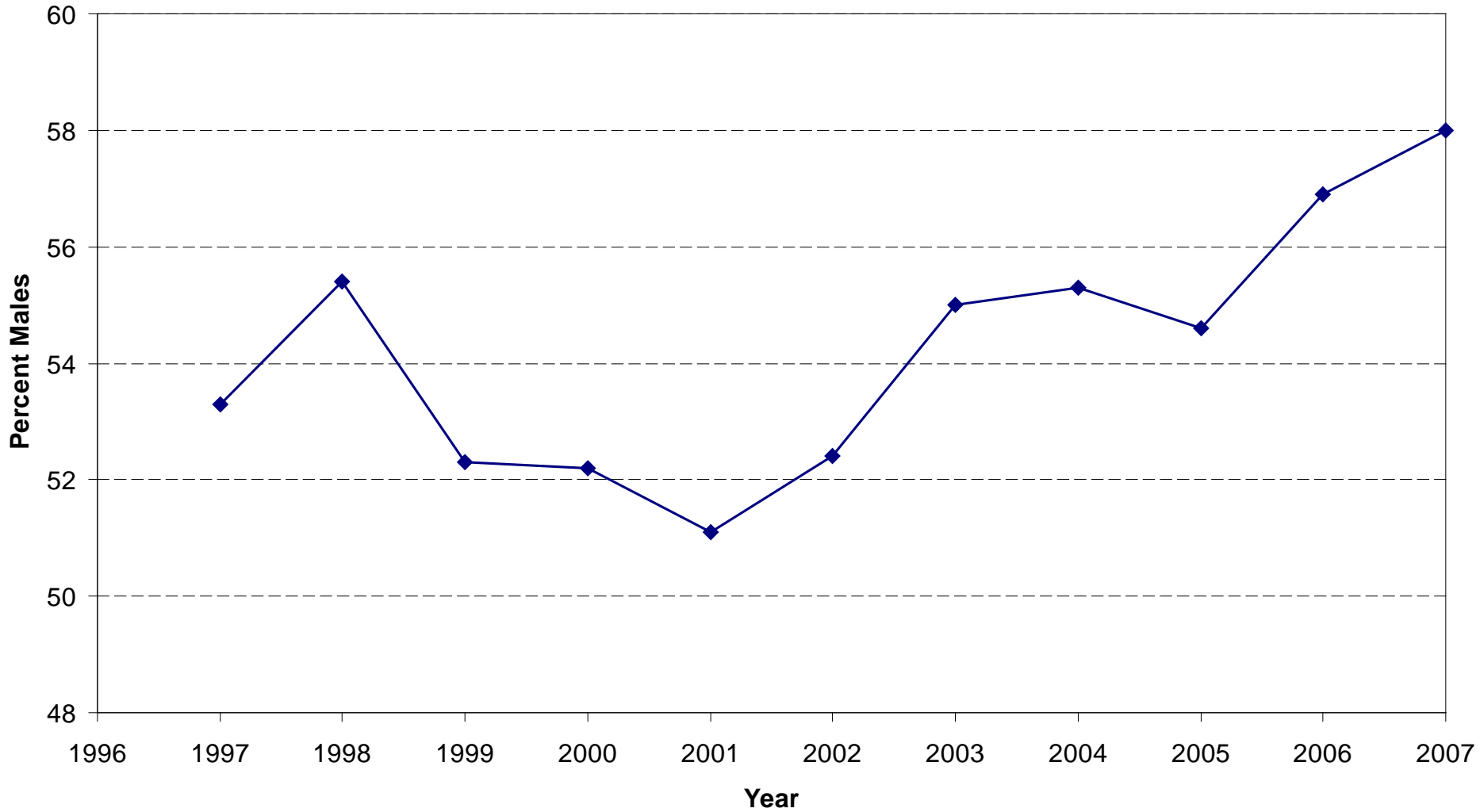


Figure 2
Racial Composition of Student Enrollment



Figure 3
Enrollment of Students in Grades 9 and 10

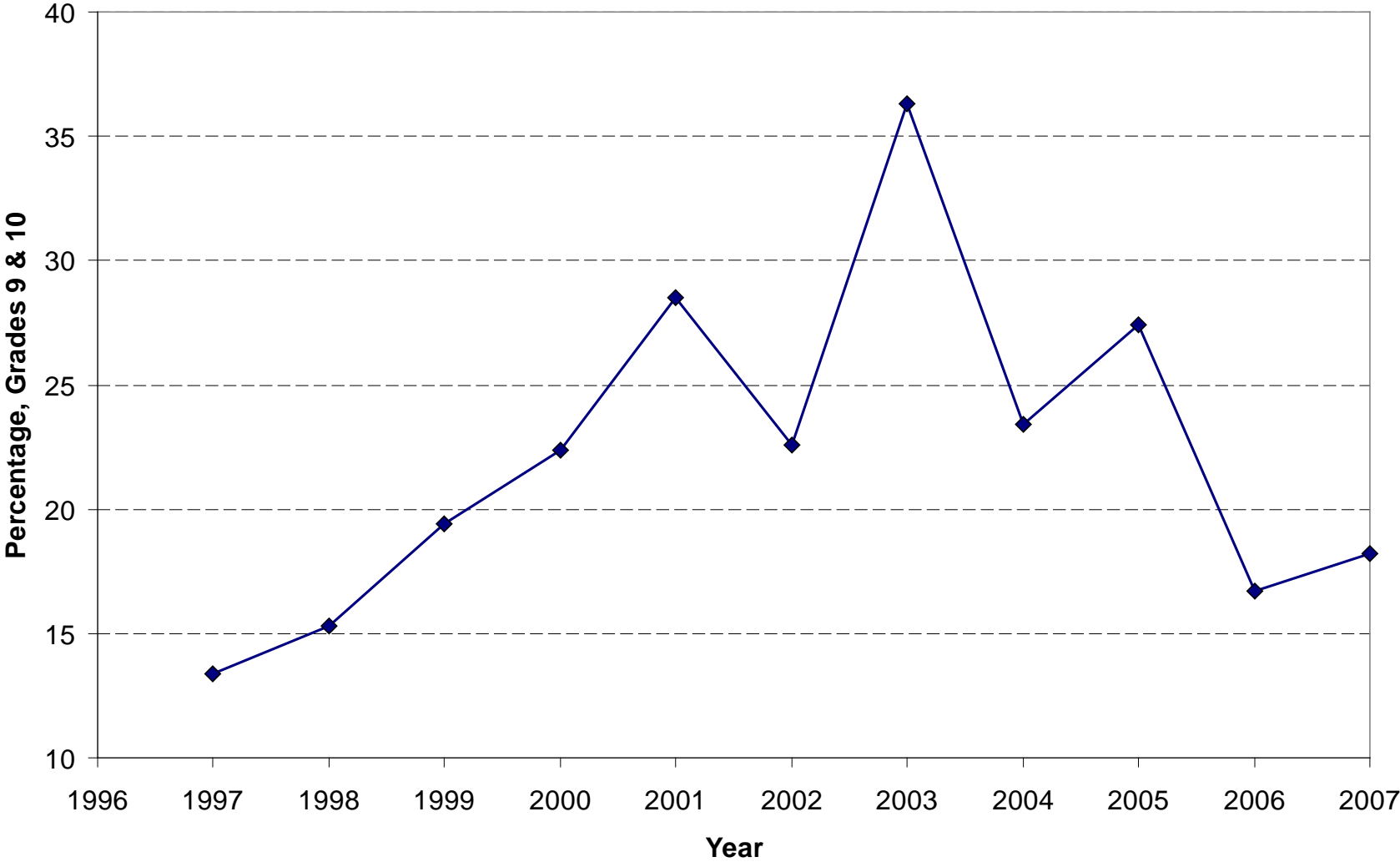


Figure 4
Average GPA's, By Race and Sex

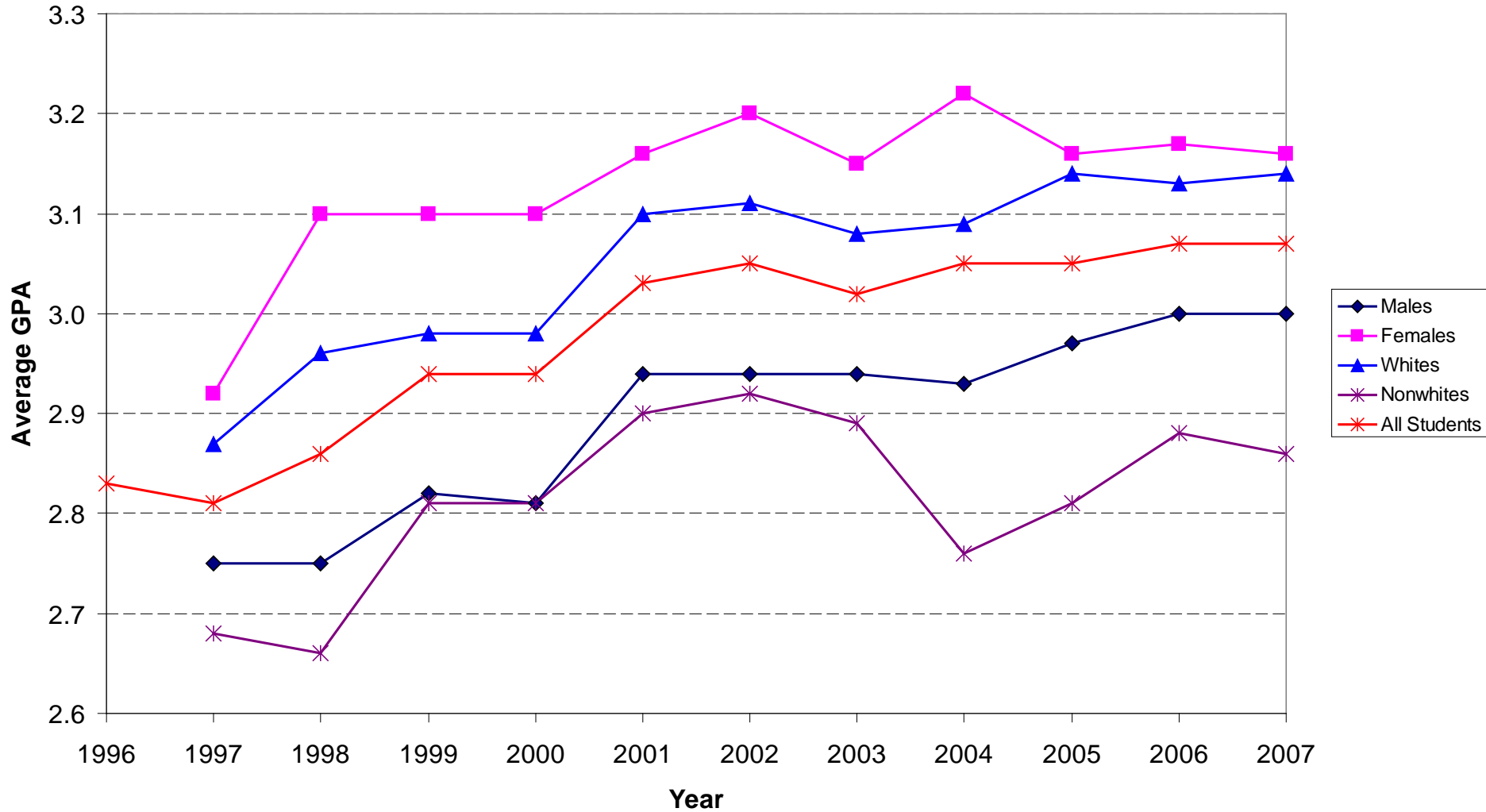
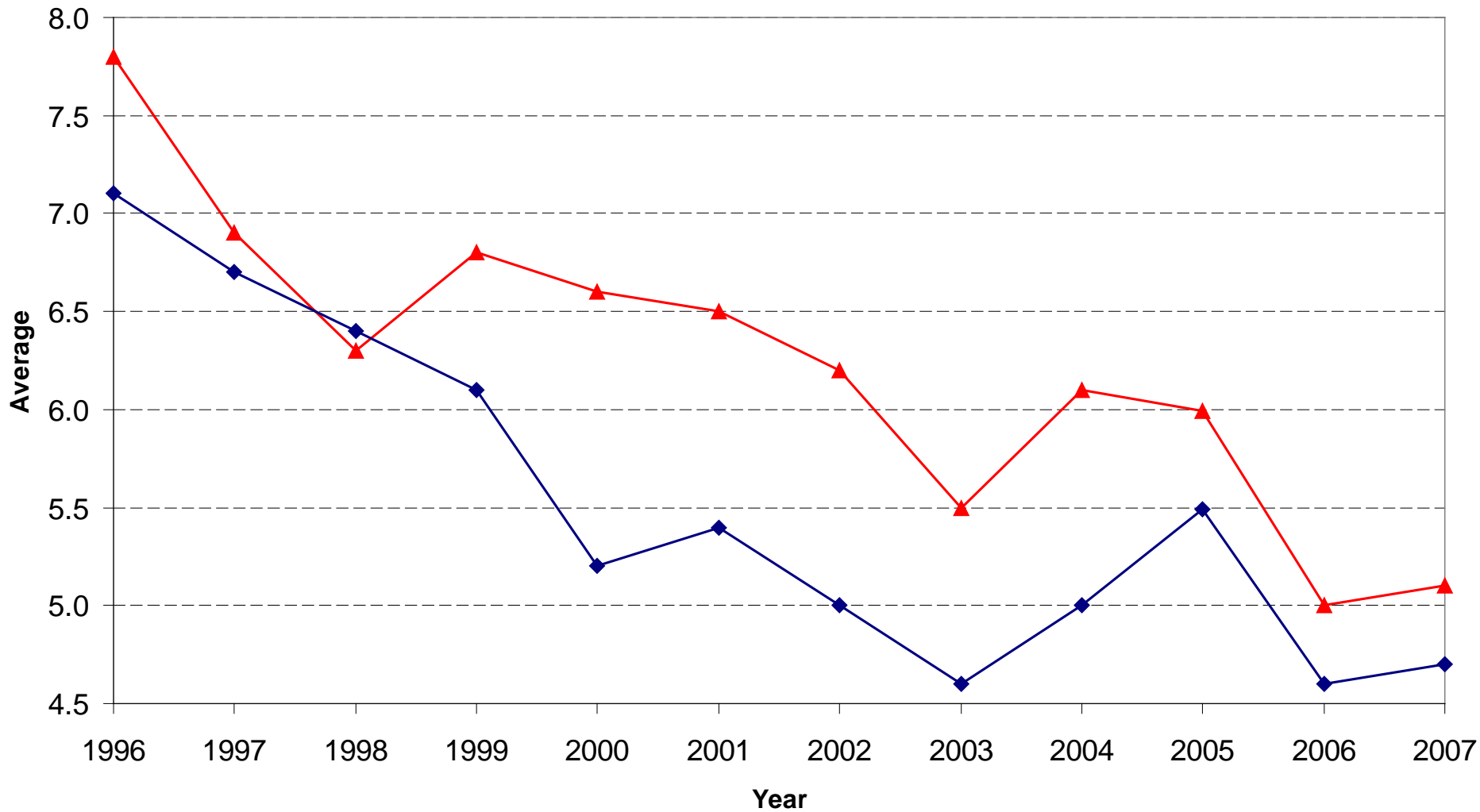


Figure 5
Average Number of Incidents of Tardiness and Unexcused Absences



Current Students: Customer Satisfaction

Course quality grade high

- Grade 3.28

But, some differences by subgroup

Figure 6
Student "Grades" for Course Quality, By Race and Sex

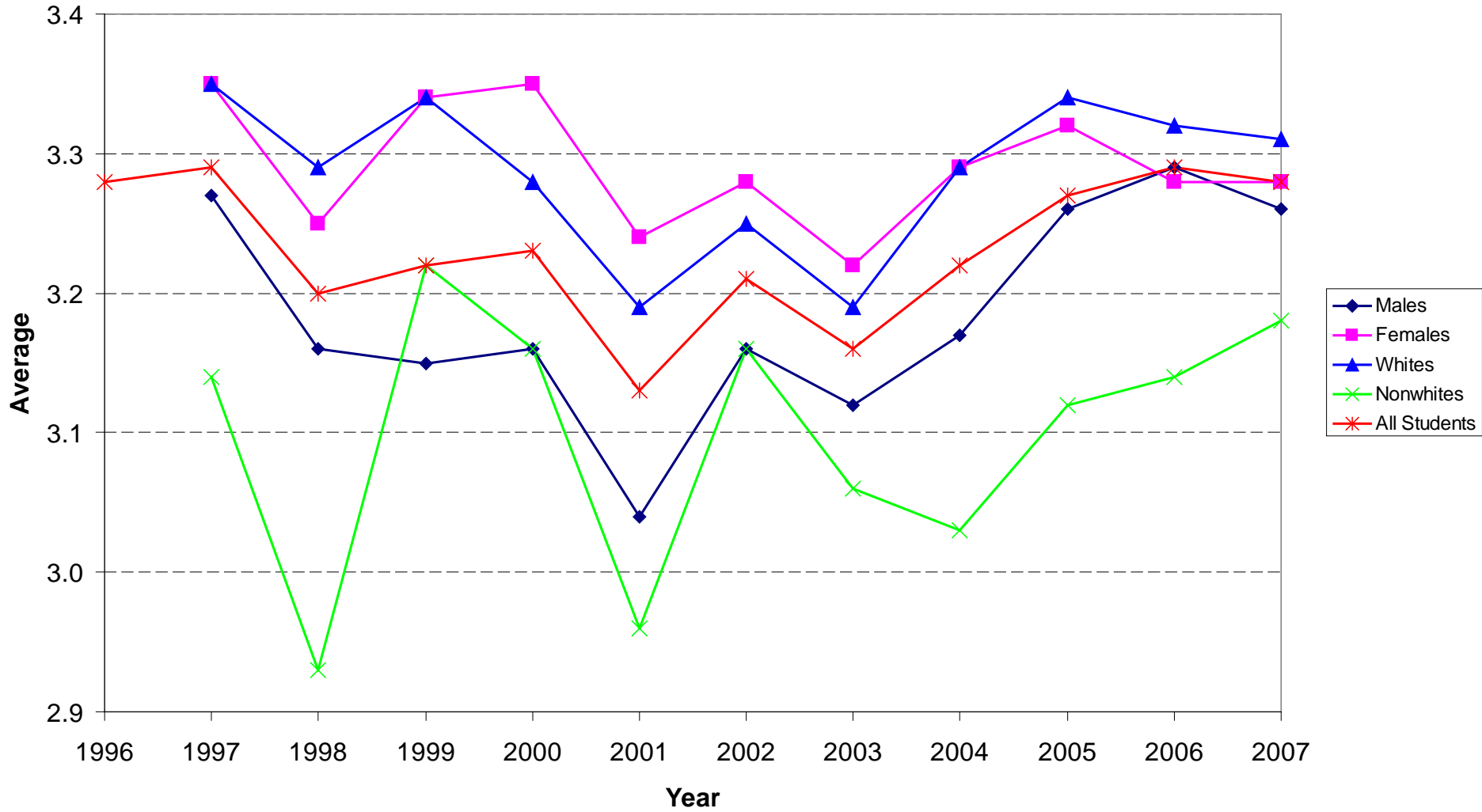
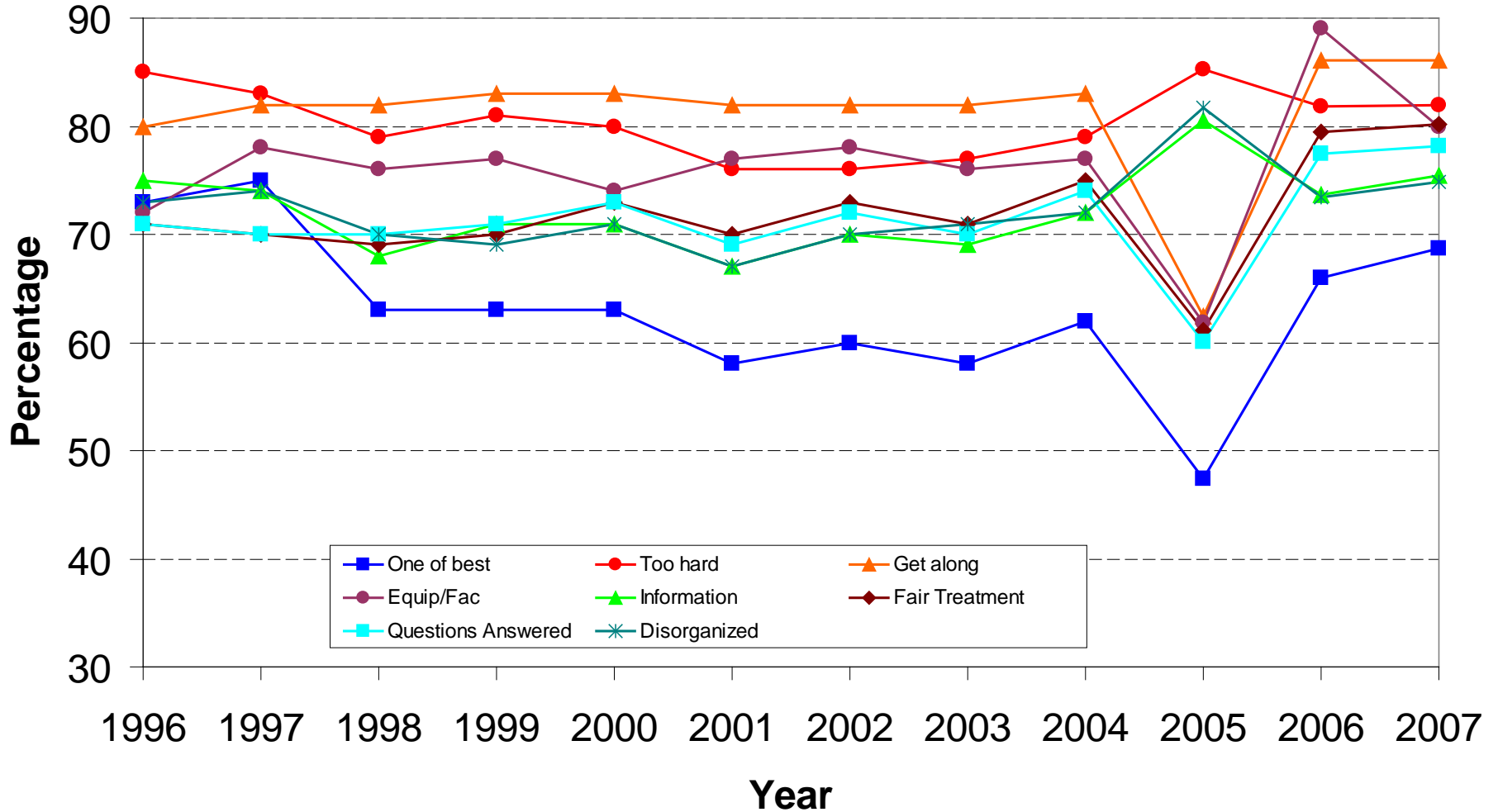


Figure 7

Indicators of Satisfaction with Aspects of EFE Classes: Percentage Agreement or Disagreement with Descriptive Items



Current Students: Work-based Learning

Work-based programs:

- 15.5 percent
- long-term trend ↓ in participation (?)
- long-term trend ↓ in paid while participating

Figure 8
Participation in Work-Based Programs



Figure 9
Participation in Work-Based Program Experiences, by Race and Sex

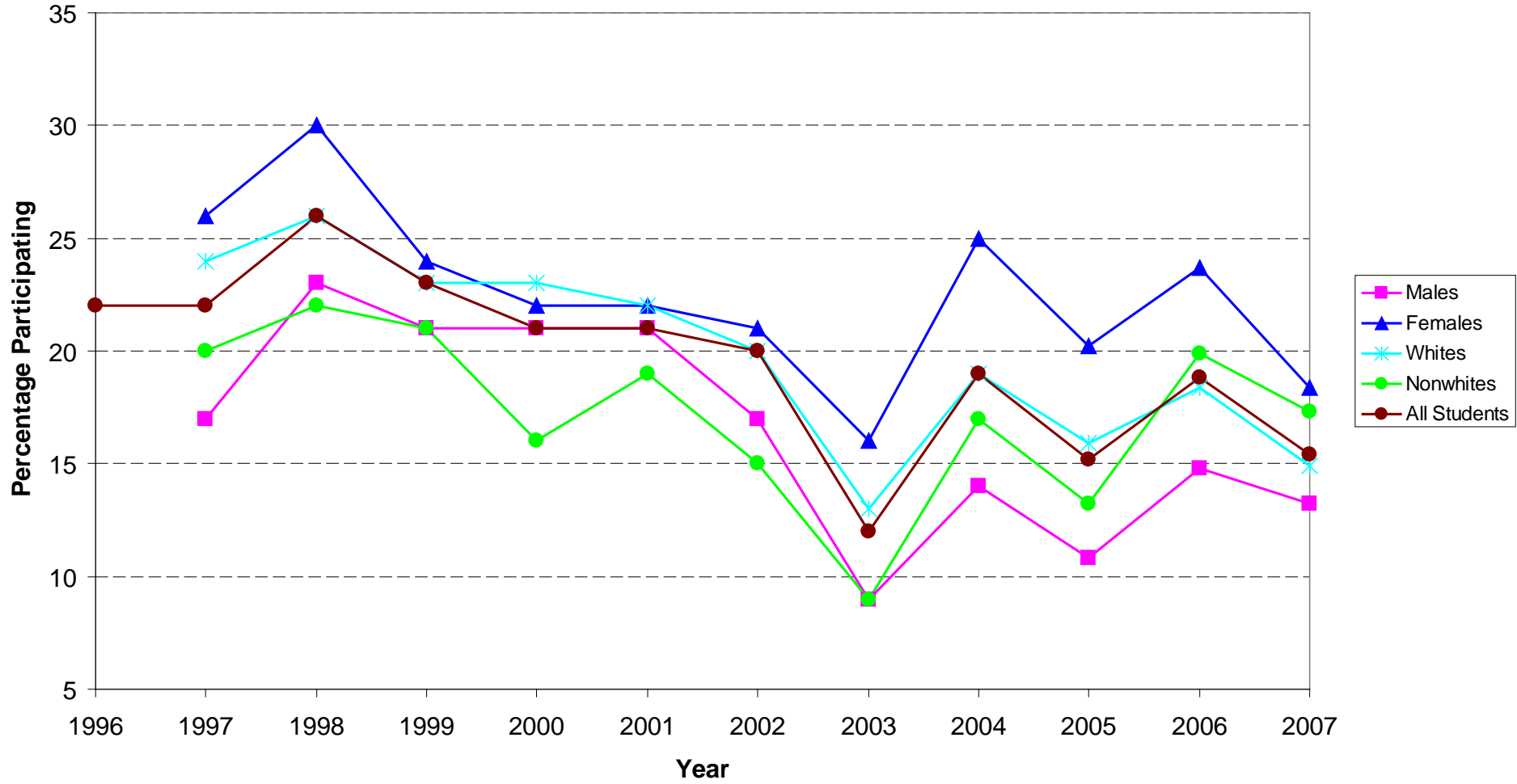
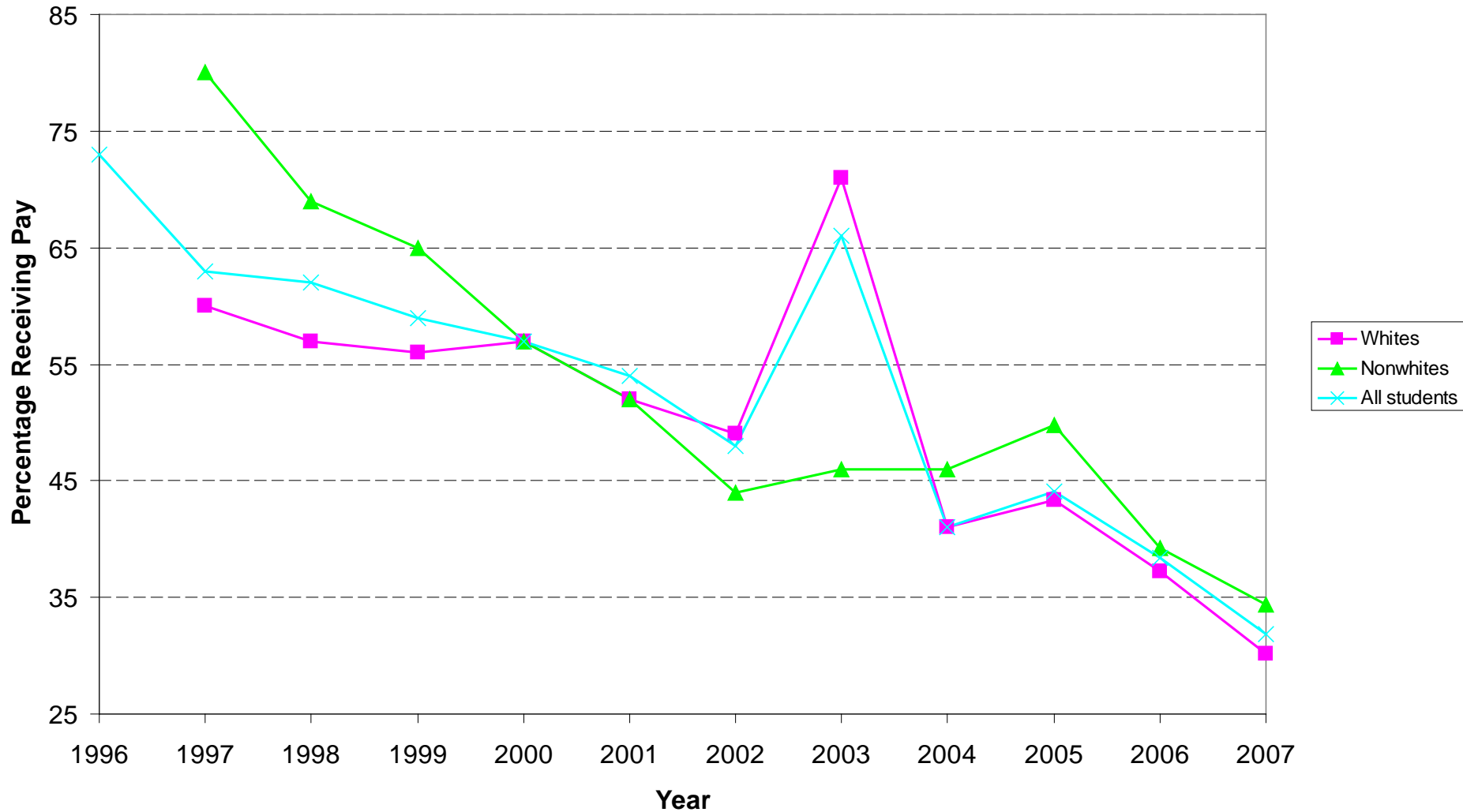


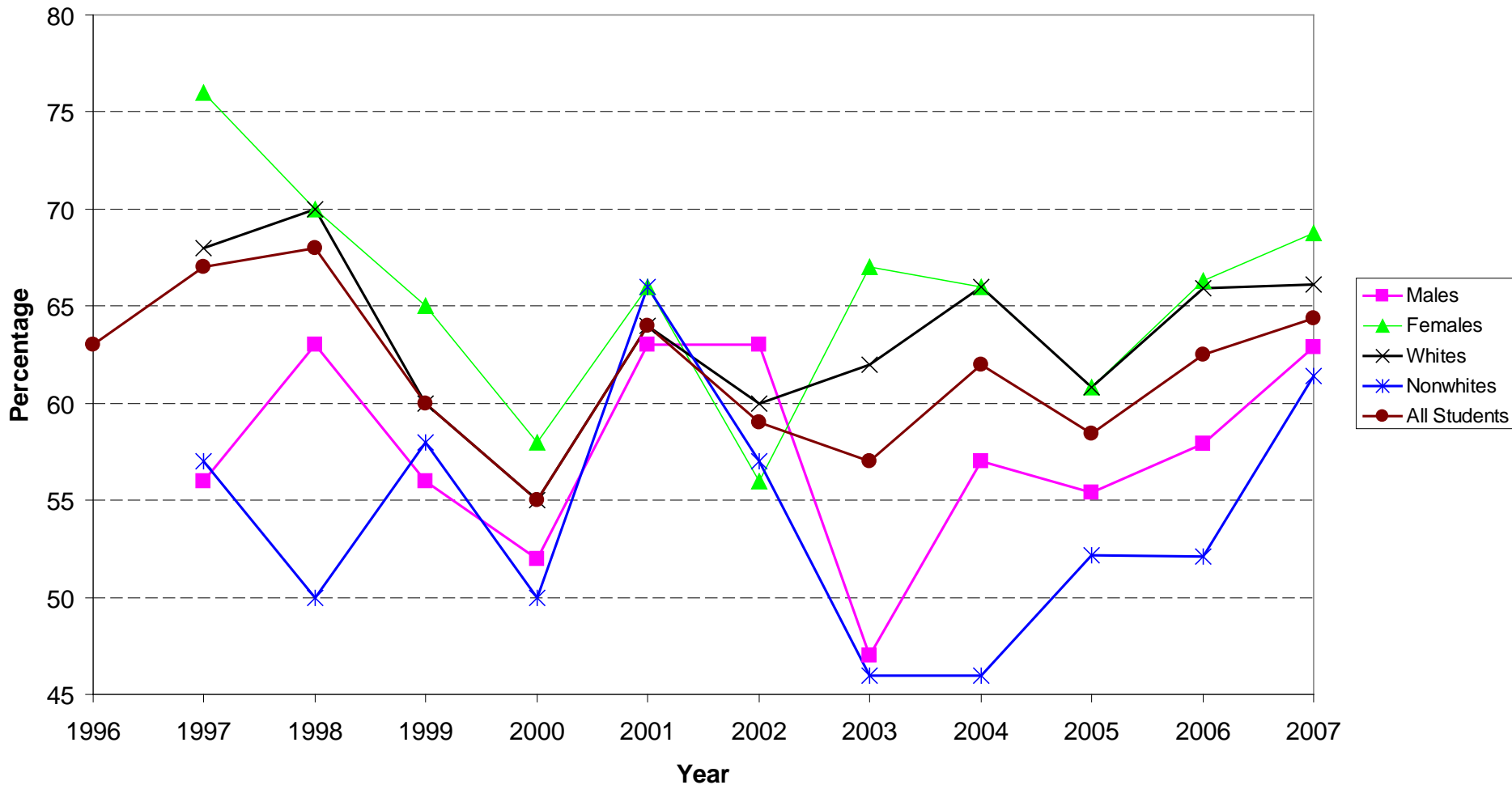
Figure 10
Percentage of Students in Work-Based Programs Receiving Pay, By Race



Current Students: Work-based Learning Experiences

Work-based programs:	<u>W</u>	<u>NW</u>	<u>Total</u>
-- Related to course work	66.1	61.4	65.8
-- Mentors are supportive	89.7	85.5	85.7

Figure 11
Percentage of Participation in Work-Based Programs
who Report Experience Related to EFE, By Race and Sex



Current Students: Postsecondary Plans

Planned attendance:

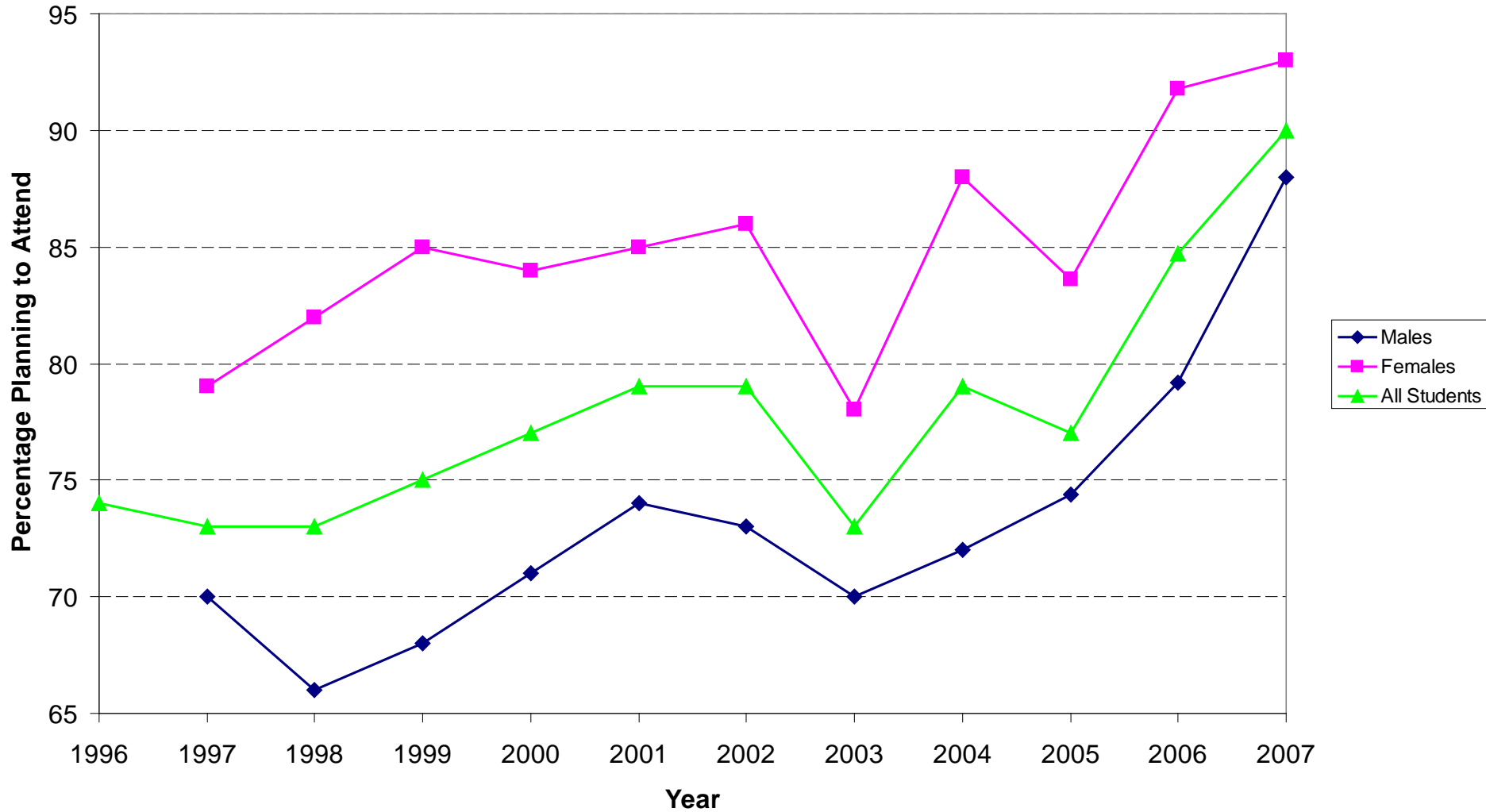
- very high (90 percent)
- especially females (over 93 percent)

Postsecondary Plans

Plan/Relevance	Sex		Race		Work-based program		Total
	M	F	W	NW	Yes	No	
Postsecondary college, university (including community college) (n = 1,875)							
Yes, right away	79	88	83	83	87	82	83
Yes, after work	9	5	9	8	5	8	7
Don't know	7	4	6	5	4	6	5
No	6	2	4	5	4	4	4

Note: Table entries are sample percentages of the overall sample, except for item nonresponse.

Figure 12
Planned Postsecondary Attendance Rate, By Sex

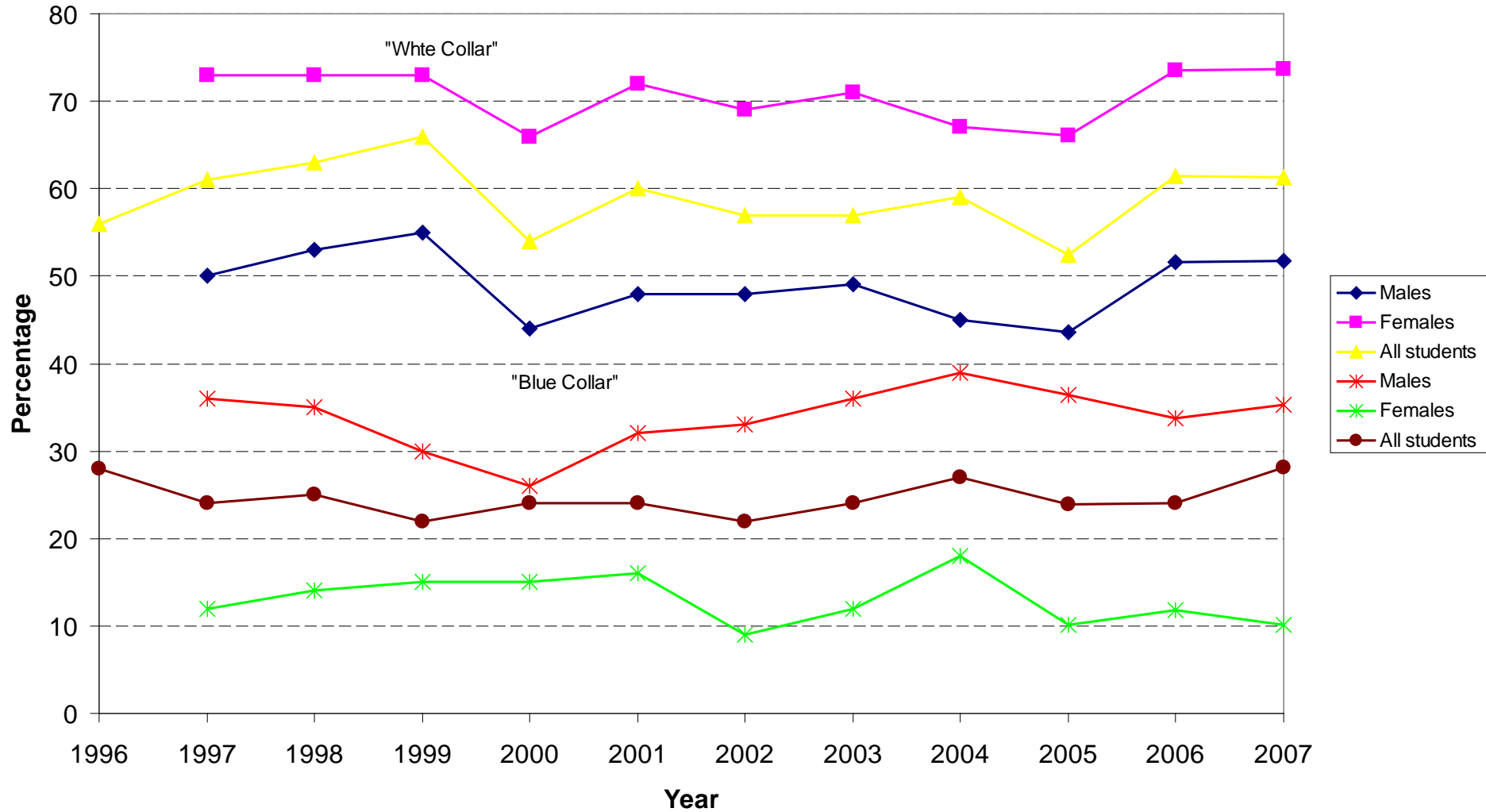


Current Students: Occupational Aspirations

White collar approximately 60 percent

Female → professional/technical

Figure 13
Occupational Aspirations, By Race & Sex



Current Students: Part-time jobs

Employment	43.6%
Hours	15.0
Wage	\$7.90
Training-relatedness	42.7%

Figure 14
Part-Time Employment Rates, By Race & Sex



Conclusions and Findings

1. EFE continues to provide quality programs to students in county
 - Few changes from previous years' data
 - High satisfaction ratings

Conclusions and Findings (Continued)

2. High rates of postsecondary attendance
 - Follow-up: 82% actual
 - Current students:
 - 83% right after high school
 - 7% later

Conclusions and Findings (Continued)

3. Enrollment of males ↑ continuing a trend.

Conclusions and Findings (Continued)

4. African American enrollment up by over 2 percentage points.

Conclusions and Findings (Continued)

5. Course quality grade ↑ for NW males; slight decreases for other groups.

Conclusions and Findings (Continued)

6. Participation in work-based programs continues to be relatively low (about 15%).

Females > males ??

Conclusions and Findings (Continued)

7. Occupational aspirations skewed toward white collar, especially females.

Conclusions and Findings (Continued)

8. No evidence, one way or other, concerning student achievement.

Conclusions and Findings (Continued)

9. Considerable amount of data that can/should be further analyzed with aim of program improvement

Committee?